

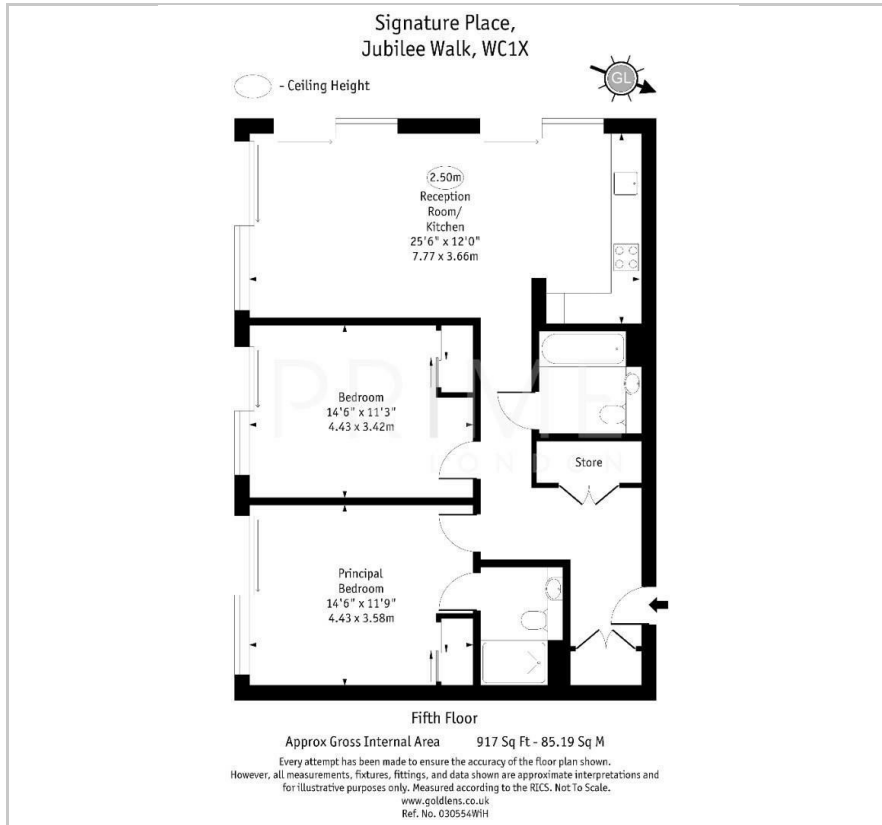
Signature House

4 Jubilee Walk, Postmark, WC1X 0BF

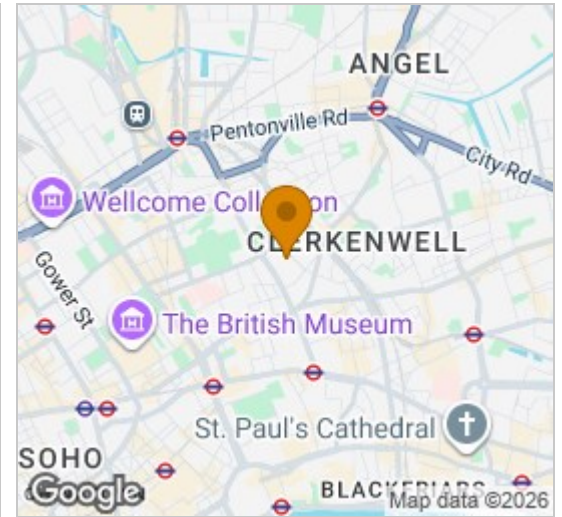
Asking Price £1,100,000



Floor Plan



Area Map



Energy Efficiency Graph



Viewing

By appointment. Contact us on 0207 052 1075 if you wish to arrange a viewing appointment for this property, or require further information.

- 917 sq ft (85.19 sqm)
- Open-plan kitchen and reception
- Residents' lounge and rooftop terrace
- Private balcony
- 24 hour concierge service
- Fully equipped gym, private cinema



An exceptional 917 sq ft (85.19 sqm) two bedroom two bathroom apartment, with a private balcony, set within the Postmark development in the heart of Central London.

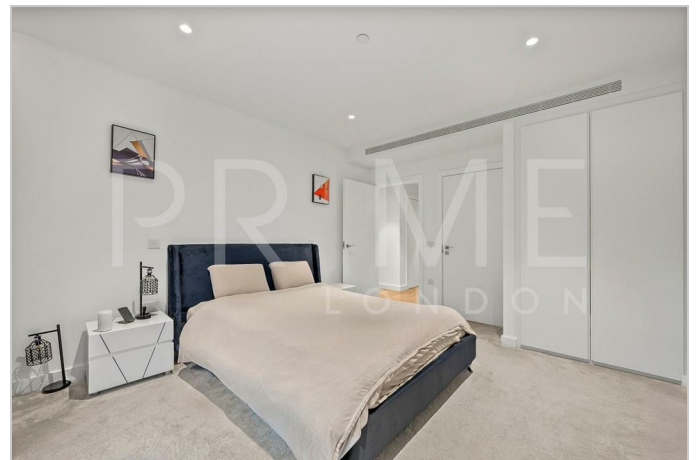
The apartment features a beautifully proportioned open-plan kitchen and reception area, designed by the renowned interior architects Conran and Partners. The kitchen is finished to a high specification with integrated Siemens appliances and quartz stone worktops.

Engineered timber flooring extends throughout the living spaces, complemented by luxurious carpeted bedrooms. The principal bedroom benefits from a bespoke fitted wardrobe and a sleek en-suite bathroom, offering both comfort and refined design.

Further benefits include purpose-built utility cupboards housing a washer/dryer, excellent storage throughout, comfort cooling to all living areas and bedrooms.

Residents enjoy access to an outstanding collection of exclusive facilities, including a fully equipped gym, private cinema, 24 hour concierge service, residents' lounge, rooftop terrace, and a beautifully landscaped central courtyard.

Ideally positioned just 8 minutes' walk from Chancery Lane station and approximately 16 minutes from Holborn station, the property is superbly located for the West End, the City, and London's key business and cultural districts.



These particulars, whilst believed to be accurate are set out as a general outline only for guidance and do not constitute any part of an offer or contract. Intending purchasers should not rely on them as statements of representation of fact, but must satisfy themselves by inspection or otherwise as to their accuracy. No person in this firm's employment has the authority to make or give any representation or warranty in respect of the property.